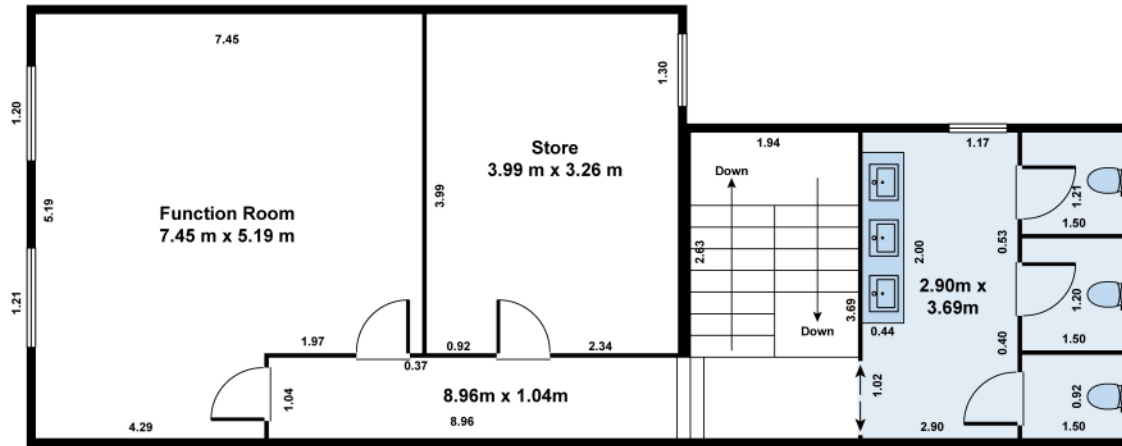
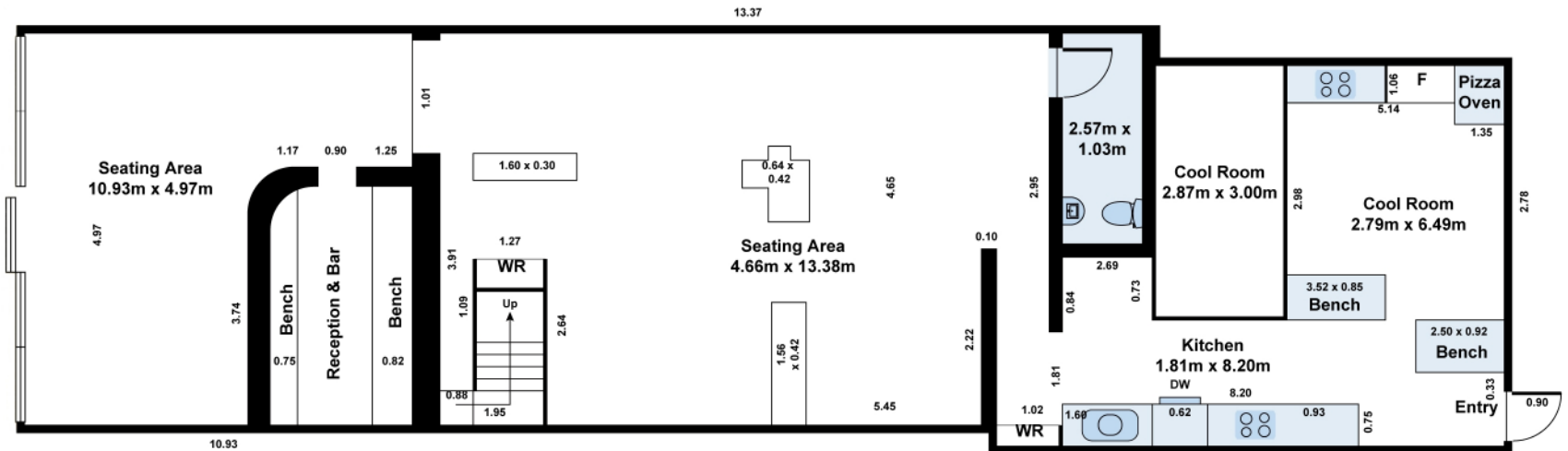


18 Napier Street, Essendon, Vic. 3040



First Floor



Ground Floor



Ground Floor	- 175.4 Sq Mtrs
First Floor	- 92.3 Sq Mtrs
Outdoor Canopy Area	- 23.5 Sq Mtrs
Total	- 291.2 Sq Mtrs

Whilst every care has been made in drawing this floor plan,
it is for illustration purposes only and is not to scale.
All details should be independently verified.